

G4 Pro

4G Multi-Biometric Access Control Terminal With a Multi-tech Card Module

Compatible with



Compatible with



G4Pro is equipped with a fully upgraded version of the Android 9.0 system, adding new features such as palm recognition, PoE power supply, and it is compatible with 4G network, satisfying various market needs including Europe, the Middle East, Africa, South Korea, Thailand, and India

Resembles G4, G4Pro is equipped with ZKTeco's enhanced Visible Light Facial Recognition technology. Also, G4Pro has installed a new mini QR code reader to scan T&A/A&C dynamic QR codes on the ZKBioSecurity mobile application. The reader supports QR code, PDF417, Data Matrix, MicroPDF417, Aztec scanning in third-party development projects.

ZKTeco also provides an LCDP tool which is used for 3rd party applications integration. It includes simplified bottom hardware interface, algorithm interface and some upper business logic and configuration, which can make development more easier and more efficient.

Features

- Compatible with 4G network optional, supported E.U. , UAE, Africa, South Korea, Thailand, India, etc.
- Scanning of T&A/A&C dynamic QR codes on the ZKBioSecurity Mobile App
- Open Supervised Device Protocol (OSDP v2.1.7)
- Dual-frequency (125kHz and 13.56MHz) card module (standard)
- Support Multi-tech card module (optional)
- Android Andriod LCDP for the 3rd-party application integration
- IEEE 802.3af/at PoE (Power over Ethernet) power supply
- Mask detection
- Anti-spoofing algorithm against print attack (laser, color, and B/W photos) and video attack

* Facial recognition for masked individuals will increase the rate of FAR(%). Palm verification for masked individuals is recommended.

Specifications (G: GL Exclusive Feature)

Capacity

- 30,000 Users (optional 50,000)
- G 30,000 Faces (optional 50,000)
- 30,000 Cards (optional 50,000)
- G 3,000 Palms (optional 6,000)
- G 1,000,000 Transactions

CPU

64bit Eight Core Customized Computer Vision CPU

Storage

2GB LPDDR3
16GB eMMC

Screen

7-inch Touch Screen
720*1280 Pixels

Camera

2MP Binocular Camera

Communication

- TCP/IP, USB Host, RS485, Wiegand Input, Wiegand Output, Wi-Fi, Bluetooth, 4G (optional)
WLAN: 2.4G, 802.11 b/g/n
Bluetooth: BT2.1+EDR/3.0/4.1 LE/4.2 BLE
G LTE FDD: B1/B2/B3/B4/B5/B7/B8/B20/B28
G LTE TDD: B38/B39/B40/B41
G WCDMA: B1/B2/B4/B5/B8
G GSM: 850/900/1800/1900MHz

Access Control Interface

RS485 (OSDP v2.1.7), Wiegand In/Out, Lock Relay Output, Exit Button, Alarm Output, Auxiliary Input, Door Sensor, External Bell

Card

125kHz ID card & 13.56MHz IC card
Multi-tech Card Module (optional)

QR Code Scanner

Dynamic QR codes on the ZKBioSecurity mobile application
QR code, PDF417, Data Matrix, MicroPDF417, Aztec scanning in third-party development projects

Fingerprint (optional)

- G BioID+ Fingerprint Sensor
- G 10,000 Fingerprints (optional 30,000)

Algorithms

ZKFace 5.6
ZKFinger 10.0
ZKPalm

Palm

FAR ≤0.01%; FRR ≤1%

Operating Temperature

-20°C to 55°C (-4°F to 131°F)

Operating Humidity

<90%RH

Storage Temperature

-25°C to 65°C (-13°F to 149°F)

Storage Humidity

<90%

Dimensions (H*L*D)

264mm*120mm*51mm (9.69in*4.72in*2in)

Facial Recognition Speed

≤ 0.5s

Facial Recognition Distance

0.5m to 3m

Power supply

DC 12V, 3A

- G IEEE 802.3af/at

Standard Firmware Functions

Push, Schedule Bell, Automatic Status Switch, Record Query, Access Levels, Groups, Holidays, DST, Duress Mode (Password & Fingerprint), Anti-Passback, Customization of Wallpaper & Screen Saver

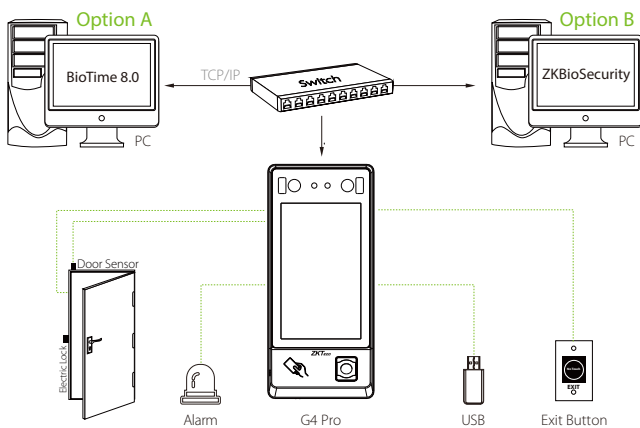
Software

BioTime 8.0 (Only Time & Attendance Firmware)
ZKBioSecurity (Only Access Control Firmware)

SDK

Android LCDP
PUSH SDK

Configuration



Dimensions (mm)

